



ACTUATOR TYPE:  
SPRING RETURN  
GMA326.1E  
TG037-0



## OVERVIEW

Control function:	Rotary spring return
Nominal torque:	7Nm
Voltage:	AC 230V
Auxiliary switches:	Adjustable auxiliary switches for supplementary functions

- For use in damper areas up to 1.5m<sup>2</sup> - friction dependent
- Self-centering shaft adapter
- Mechanically adjustable span between 0° - 90°
- Prewired with 0.9m long connection cable
- Position indicator

## CABLE LABELLING

PIN	CABLE				DESCRIPTION
	CODE	NO.	COLOUR	ABBRE.	
Power supply	L	3	Brown	BN	Phase AC 230V
	N	4	Blue	BU	Neutral conductor
Auxiliary switch	Q11	S1	Grey / Red	GY / RD	Switch A input
	Q12	S2	Grey / Blue	GY / BU	Switch A normally - closed contact
	Q14	S3	Grey / Pink	GY / PK	Switch A normally - open contact
	Q21	S4	Black / Red	BK / RD	Switch B input
	Q22	S5	Black / Blue	BK / BU	Switch B normally - closed contact
	Q24	S6	Black / Pink	BK / PK	Switch B normally - open contact

**TECHNICAL SPECIFICATION TABLE**

AC 230V supply	Operating voltage / Frequency	AC 230V ± 10% / 50/60Hz
	Power consumption - Running Power consumption - Holding	7VA / 4.5W 3.5W
Functional data	Nominal torque Maximum torque (blocked) Nominal rotary angle / Max. rotary angle Runtime for rotary angle 90° (motor operation) Closing time with return spring (on power failure)	7Nm 21Nm 90° / 95° ±2° 90s 15s
Auxiliary switches	AC power supply • Switching voltage • Nominal current res./ind. DC power supply • Switch voltage • Nominal current Switching range for auxiliary switches / Setting increments	AC 24V - 230V 6 A / 2 A  DC 12V - 30V DC 2 A 5° - 90° / 5°
Connection cables	Cross-section Standard length	0.75mm <sup>2</sup> 0.9m
Degree of protection of housing	As per EN 60529 (note mounting instructions)	IP 54
Environment conditions	Operation / Transport • Temperature • Humidity (non-condensing)	IEC 721-3-3 / IEC 721-3-2 -32 +55°C / -32 +70°C <95% r.h.
Dimensions	Actuator: W x H x D Damper Shaft: Round / Square Damper Shaft: Min. Shaft length	81mm x 192mm x 63mm 6.4mm - 20.5mm / 6.4mm - 13mm 20mm
Weight approx.	Without packaging	1.3kg
Service life	Cycles	60 000
Sound level	Motor Spring Return	<55dB <67dB

**SAFETY**

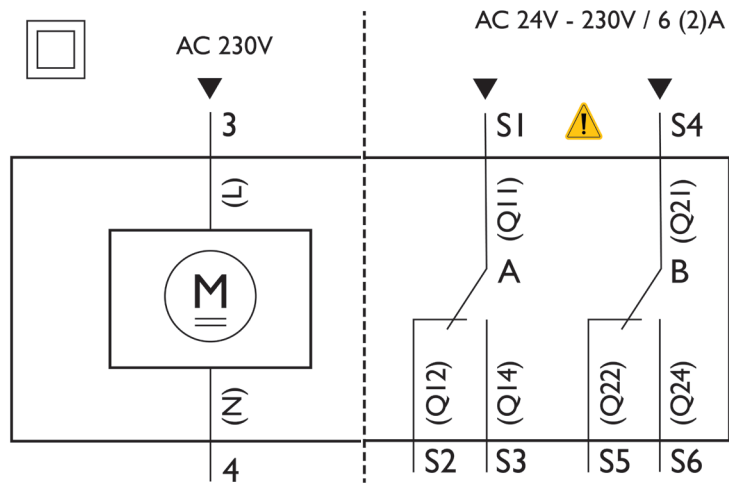
CAUTION: National safety regulations



- Failure to comply with national safety regulations may result in personal injury and property damage.
- Observe national provisions and comply with the appropriate safety regulations.
  - Use only properly trained technicians for mounting, commissioning and servicing.

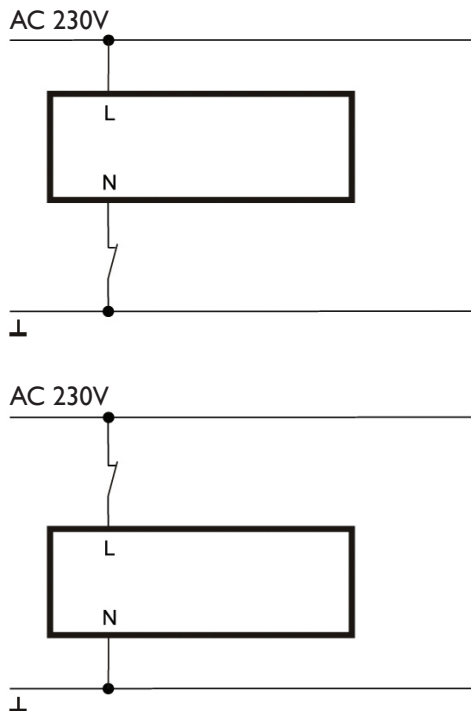
**INTERNAL DIAGRAM**

Two - position control



**CONNECTION DIAGRAM**

Two - position control  
Single pole single throw (SPST)



ACTUATOR DIMENSIONS IN MM

